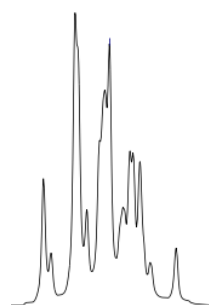
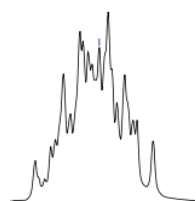
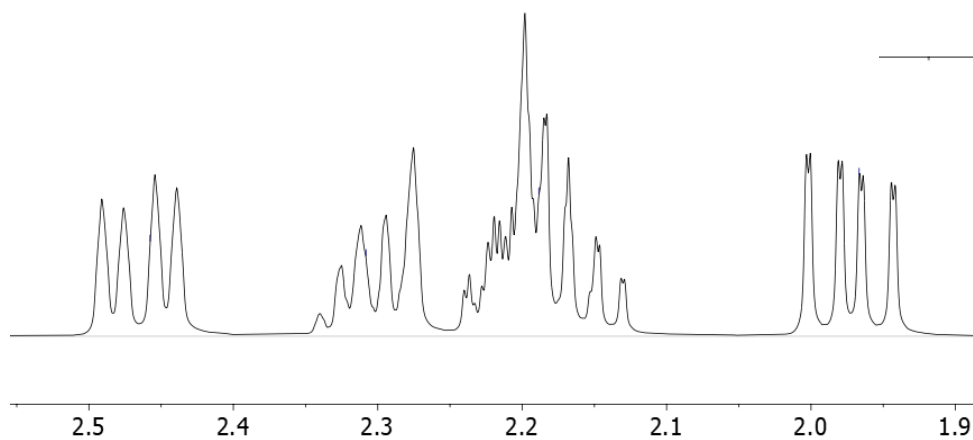


-7.26 CDCl₃

¹H-NMR (500 MHz, CDCl₃)



1.6



3.73
3.71
3.36
3.34
-2.83
-2.31
-2.19
-1.97
-1.62

2.86
2.99
0.99
1.00
1.00
1.00
2.04
0.99
0.99

11.0 10.0 9.0 8.0 7.0 6.0 5.0 4.0 3.0 2.0 1.0 0.0 -1.0
f1 (ppm)